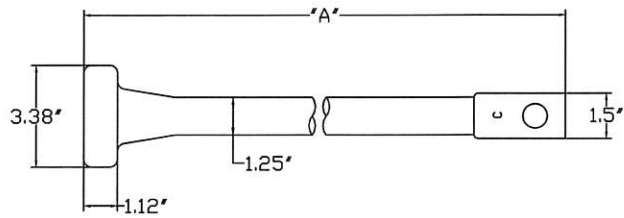
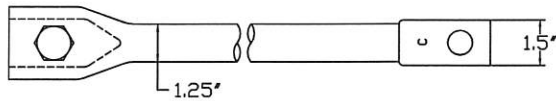


GRouted ROCK ANCHOR

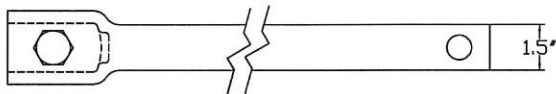


CATALOG NO.	DESCRIPTION	'A'
W1040004	ROCK ANCHOR	36'
W1040055	ROCK ANCHOR	84'

RR ANCHOR ROD EXTENSIONS

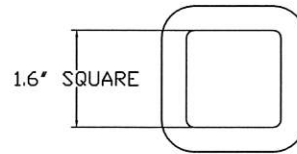


SS ANCHOR ROD EXTENSIONS



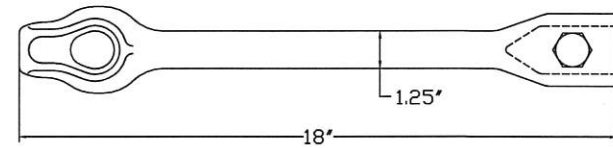
ANCHOR ROD EXTENSIONS USED WITH GROUTED ROCK ANCHORS			
EXTENSION LENGTH (FT)	RR EXTENSION	SS5 EXTENSION	SS150 EXTENSION
3.5	12696	12655	C1100388
5	12697	12656	C1100470
7	12698	12657	C1100389
10	12699	12658	C1100440

SOCKET DETAIL



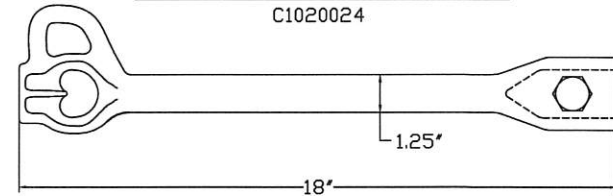
THIMBLEYE GUY ADAPTER

C1020023



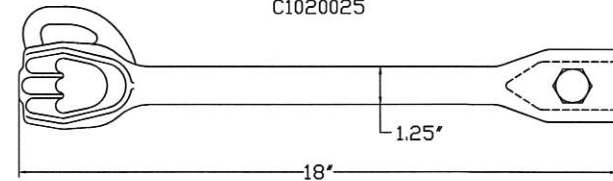
TWINEYE GUY ADAPTER

C1020024



TRIPLEYE GUY ADAPTER

C1020025



**CHANCE**  
TOLERANCE CHART  
X ± .060 FRAC ±1/16 ANGLES ±2°  
XX ± .030 ADD DRAFT (UNLESS NOTED)  
XXX ± .005 CASTING ± FORGINGS 7°

CONFIDENTIAL: THIS DRAWING AND ITS CONTENTS ARE CONFIDENTIAL AND THE EXCLUSIVE PROPERTY OF HUBBELL POWER SYSTEMS. NO PUBLICATION, DISTRIBUTION OR COPIES MAY BE MADE WITHOUT THE WRITTEN CONSENT OF HUBBELL POWER SYSTEMS. HUBBELL POWER SYSTEMS UNPUBLISHED. ALL RIGHTS RESERVED UNDER THE COPYRIGHT LAWS.

		<b>HUBBELL POWER SYSTEMS</b>	
TITLE: <b>GRouted ROCK ANCHOR COMPONENTS</b>			
SIZE	DWG NO.	CAT / PART / ASSY NO.	REV
SB	SA1040004	SEE TABLES	B
DO NOT SCALE THIS DRAWING	DRN BY JCA	DATE 3/10/09	SHEET 1/1